



## COMPANY PROFILE

*Create. Enhance. and  
Sustain.*



**Ganga R. K. Industries Pvt. Ltd.**  
**Kotecha Steel Forge & Cast Industries Pvt. Ltd.**

(A Government of India Recognized Export House)  
(An ISO-9001:2015 & IATF-16949:2016 Certified Company)

# INTRODUCTION

Annual Group Turnover  
\$ 28.2 Million

**RGK GROUP** companies include –

- Ganga R K Industries Pvt. Ltd.
- Kotecha Steel Forge & Cast Industries Pvt. Ltd.

**44+** years of experience

- Engineering field
- Manufacturing
- Casting
- Forging
- Fabrication
- Gear Shop

With 300+ employees.

Specializes in



**1** **N**ODULAR  
Casting &  
Grey Cast  
Iron  
Machined  
Components

**2** **F**ORGING  
With Heat  
Treatment  
&  
Machine  
Components

**3** Precision  
**F**ABRICATION  
with  
Machined  
Components

**4** **G**EAR SHOP  
with  
Skiving Gear  
cutting M/C &  
Inspection

Our **G**oals are to find a local representative, sustainable partnership and Joint Venture partner who is interested in the expansion of his business and have a special technical knowledge with experience to develop new products with us.





# ABOUT US

- Under the visionary leadership of Mr. R.G. Kotecha, RGK Group of Industries in Rajkot, Gujarat, India, has thrived since 1979. We are a leading Manufacturer & Exporter specializing in Casting and Forging components and sub-assembly for Agriculture, Construction, Transport, Food & Beverage, Power, Solar, Pumps, and more.
- With a qualified team of 300+ employees, we achieve an annual group turnover of \$28.2 million. 92% of our castings are supplied to OEM manufacturers in the USA (65%), Europe (12%), Other countries (15%) & India (8%). Our goal is to find a sustainable strategic partnership and Technical Joint Venture partner for utilization of our state of art infrastructure and facility for product expansion and development.



# ABOUT US



## Casting:

- With two Foundries
  - 1) State-of-the-art DISA High Pressure line & Arpha-450
  - 2) Hand molding & Arpha-300

Both the foundries having fully advanced testing equipment, we ensure top-notch manufacturing processes. Our expertise includes CI Casting & Nodular Casting part weight range from 0.1 kg to 120 kg and 150 Molds per Hours.

## Machine Shop:

- With all state-of-the-art In-house machinery of (16 Turning, 10 VMC, 8 HMC, 7 VTL, etc.) we have a JV with Kranti Industries which comes in top 5 Machinist list in India. We have associated partner with Ashish Engineering, Innovative Engineering, etc. which are expert in precision small part machining.

## Forging:

- We do not have In-house Forging manufacturing facility as our requirement of forgings are hot forge, cold forge, press forge, 0.5 to 6 Tones forge. So it could be difficult to have such verity of manufacturing In-house. So we have some of the tie-ups as below:
  - 1) Press Forge: Lava
  - 2) 0.5 ton: Lava ,Kamdhenu, Austenite
  - 3) 1-3 ton: Kamdhenu, Austenite, Avadh
  - 4) 3 ton & above: Tirupati, Unique



# ABOUT US



## Fabrication:

- The Fabrication Department is a cornerstone of our manufacturing process, crafting top-tier components pivotal to our products' integrity
- Skilled Workforce: Our seasoned technicians and craftsmen excel in metal fabrication.
- Custom Solutions: We specialize in tailored, precision-fabricated parts, 3 wheelers, body, chassis parts and assemblies, etc.
- Rigorous Inspection: Each component undergoes meticulous inspection to meet specifications and standards.
- Compliance: We adhere to industry regulations, prioritizing quality and safety
- Our Fabrication Department upholds our commitment to excellence, driving innovation and exceeding customer expectations in metal fabrication

## Gear Shop:

- The DVS Pittler PV315 machine serves as a comprehensive machining center, proficient in various gear cutting tasks with a 45-degree helix angle. It also offers chamfering, OD and ID turning, and drilling through a 12-tool turret, optimizing tool life and maintaining consistent quality. The machine employs Power Skiving, ensuring high efficiency and precision for both internal and external gears. Its compact design and user-friendly interface facilitate handling complex geometries and materials with ease.
- The Klingelnberg P26 is a precision measuring center that can inspect various types of gears and other components with high accuracy and efficiency. It is a fully automatic CNC-controlled machine that can measure dimensions, form, contour and surface roughness in one cycle. It can handle workpieces up to 400 mm in diameter and 300 kg in weight.

# OUR CORE TEAM



Ramnik Kotecha  
Founder & MD



Bhavesh Pabari  
Director



Nishita Chauhan  
Director



Samir Kotecha  
Director - Foundry



Hiren Vagdama  
R&D Head



Suresh Kalena  
Quality Head



Bhautik Kaneria  
Supply chain Head



Kamlesh Kakkad  
Admin Head



Rajan Gongane  
Vice President Foundry



Piyush Viroja  
QMS Head



## MISSION STATEMENT

---

*Our mission is to produce and continually develop quality products at a competitive price while fostering a climate where environmental technologies can thrive. We will always strive to service our customer with the utmost integrity, and to their complete satisfaction. It is our goal to ensure our mission by continuous self improvement, growth in our operations and employees; while maintaining profitability to the benefit of our customers, potential partners, employees, and community. All employees will work together in combining their efforts and skills to ensure our mission and goals are fulfilled in a courteous manner.*

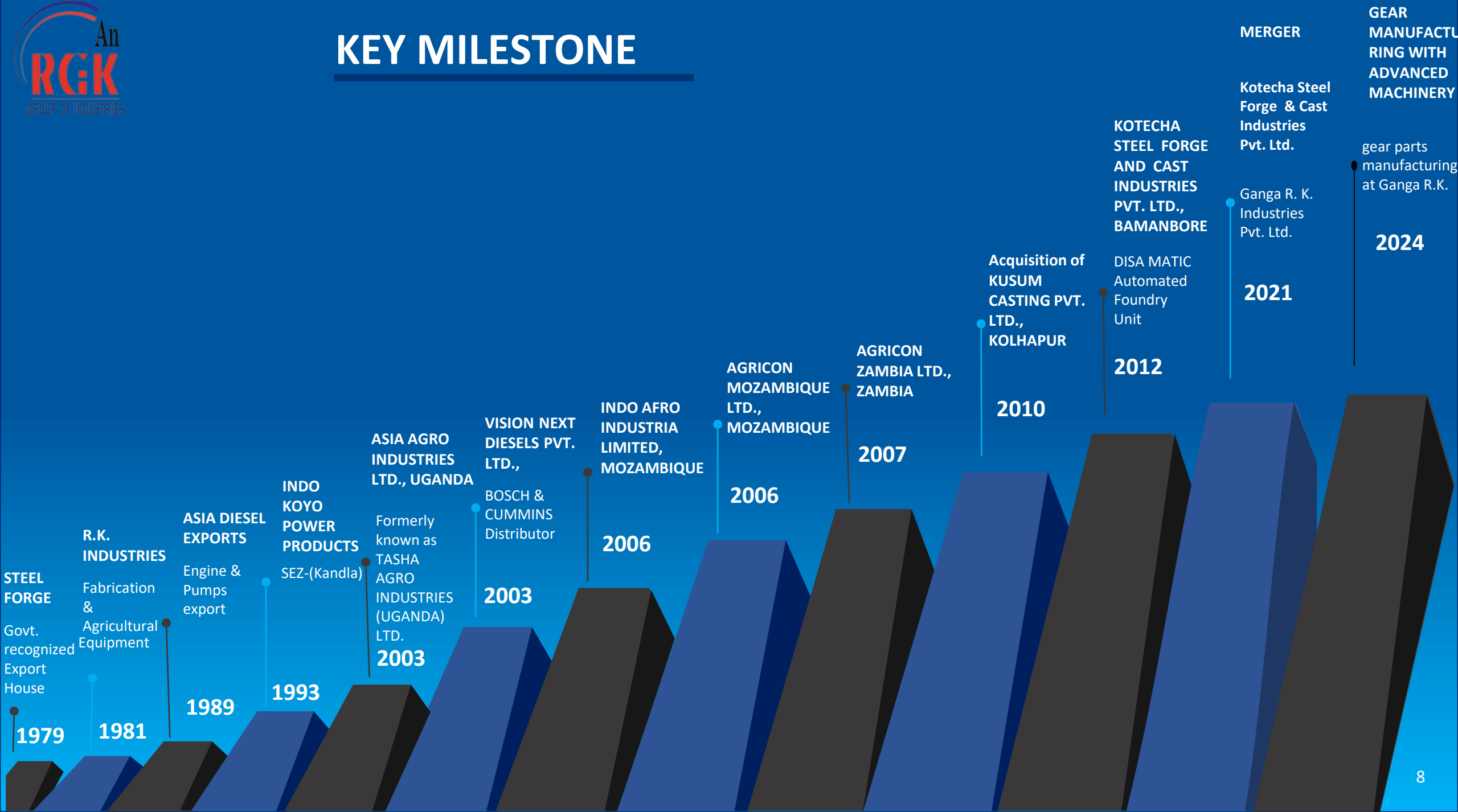
## VISION STATEMENT

---

*The vision of RGK GROUP is to continue the heritage of our Company and be a premier INDIAN manufacturer of top quality products. We dedicate ourselves to be the supplier or potential partners of choice when our type of products are being sought. This vision will be accomplished by sharing the responsibilities of planning and decision making with all of our employees. RGK will strive to maintain the image it has developed over the many years with its suppliers, employees and community as a company of excellence.*



# KEY MILESTONE



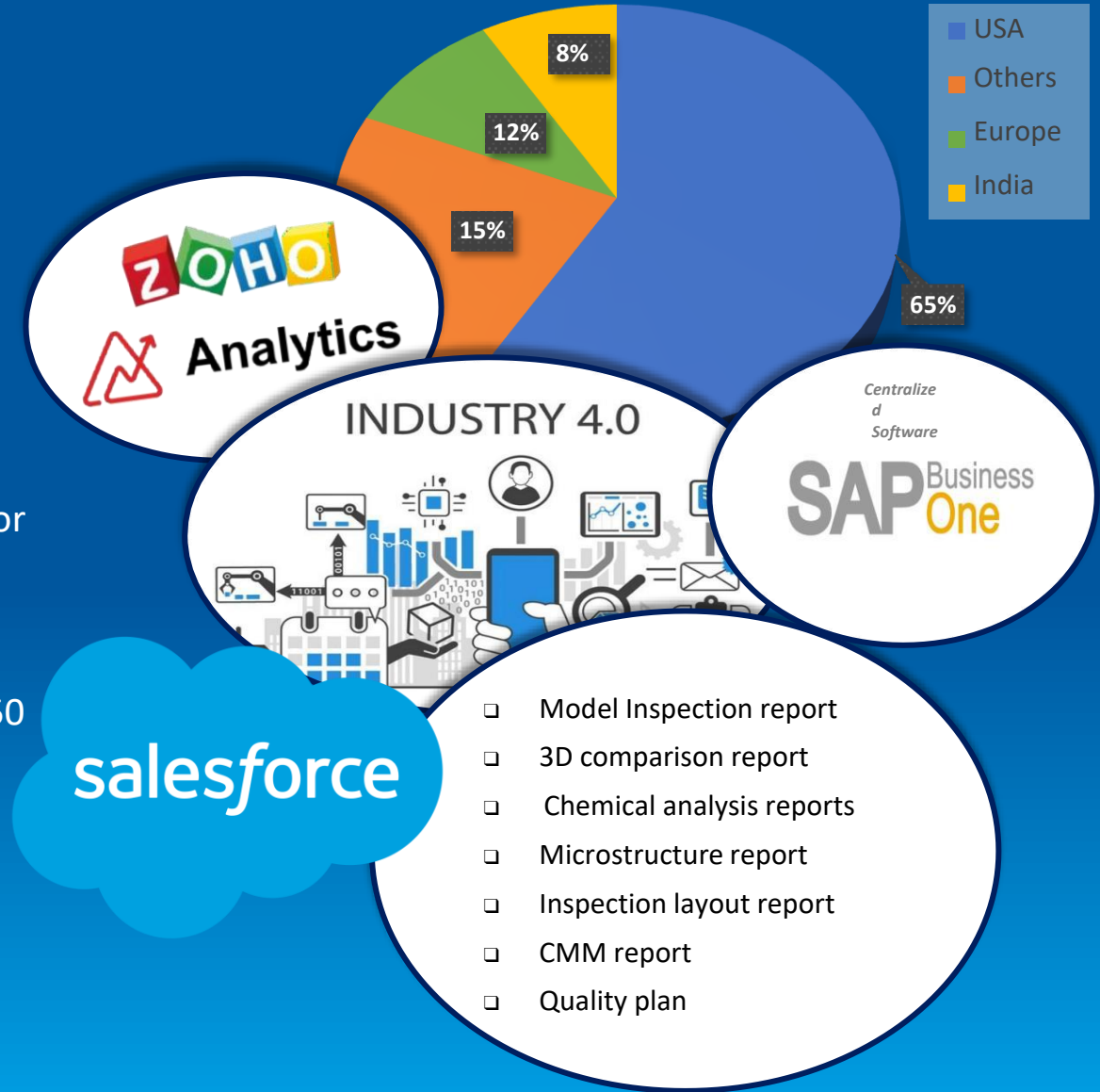


EXPORT TO

# WHY US?

- Exposure to International Markets & fully developed in house department for international documentation & shipping.
- Continuous Process Improvement & ongoing Product Development
- Component Scanning, CAD/CAM Processes, Casting Simulation, ERP reliance to optimize processes & minimize error rates.
- License design software- Solid Edge, Cam Turning, White ray scanner for reverse engineering, Faro Arm, CMM, Contouring, IQA software for ballooning and report generation.
- All equipment, machines, complete foundry are IOT compliances.
- Highly Flexible in Manufacturing components ranging from 0.5 kg to 150 kg as well as batch & mass production.
- Prompt response to inquiries, Aggressive development of model, design, tooling & sample with process chart, on-time delivery, customized packaging for every client.
- International Port Facility near our Kandla Unit – 20 miles to the Port, 160 miles from Rajkot unit, 280 miles from Kolhapur unit.

Components Supplied to OEM Manufacturers





# FOUNDRY - UNIT

*Molding Line*



*Molding Process Line*



*Pouring*



*Fully Automatic Sand plant with 30 MT/hour Sand Handling system*



*Molten Metal pouring through Monorail*



*AP 14 Short Blast Machine*





# FOUNDRY MACHINERY & TESTING EQUIPMENTS

*Vertical Cold Box Core Shooter - 30 kg*



*Horizontal Cold Box Core Shooter Double station – 10 kg & 20 Kg*



*Core Scratch Hardness Inspection*



*Tensile Testing Machine*



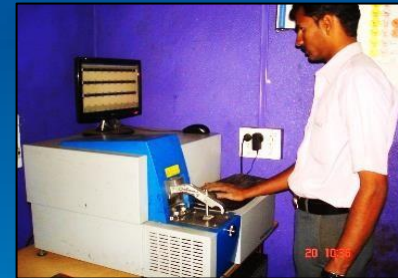
*Sand Testing Lab*



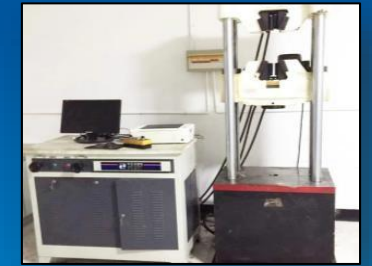
*Pyrometer with IOT Compliance*



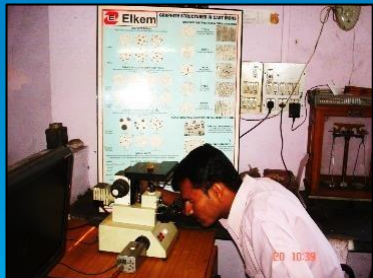
*Spectro Analysis*



*Mechanical Properties Testing*



*Micro Analysis*



*Micro Scope with IOT Compliance*



*Hardness Testing*



*Each Stage Visual Inspection*





# DISA MATCH HPML FOUNDRY

<https://www.youtube.com/watch?v=oCWgMWjtt30>

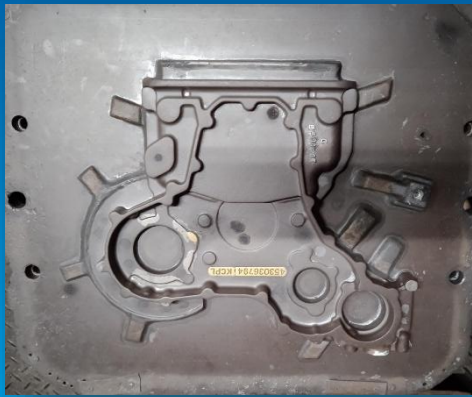
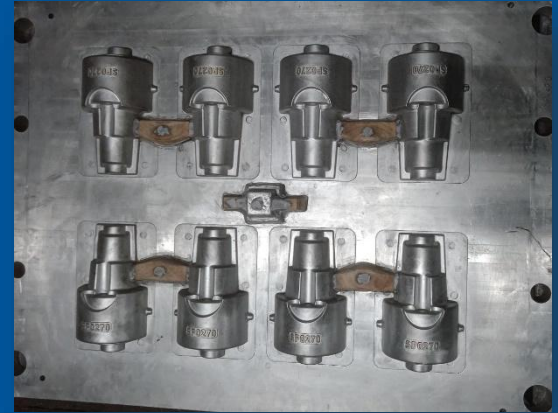
- DISA HPML Machine Installation has been done
- Capacity is increased by 500 metric tons per month
- Surface finish of casting will be increased further due to high mold hardness.
- Productivity has been increased due to high molding capacity from 35 mold per hour to 120 mold per hour. Box size is 500 X 600.





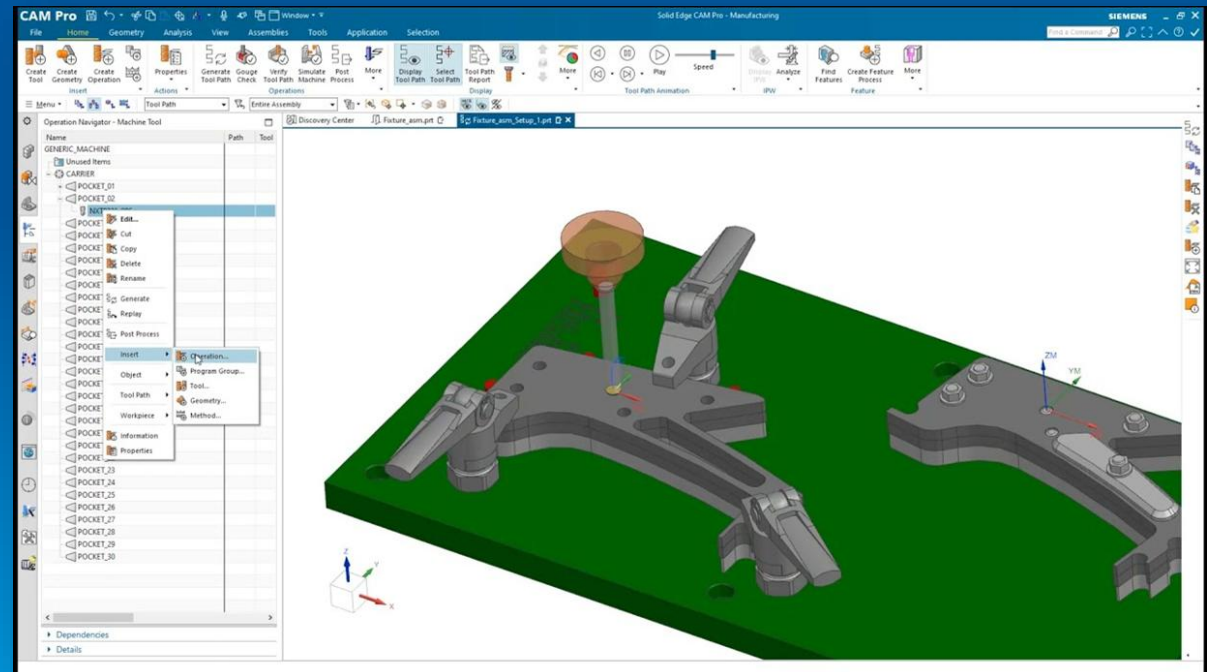
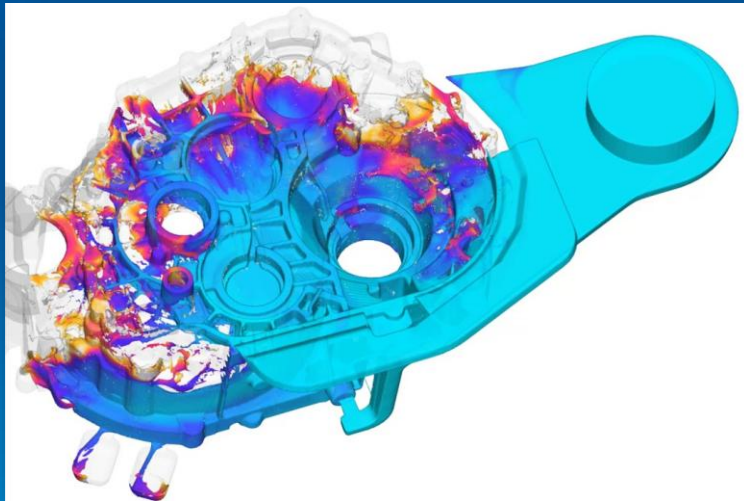
# PATTERN MANUFACTURING

At our company, we manufacture patterns in-house using our state-of-the-art Machine shop. This allows us to produce high-precision patterns for casting with the help of excellent software tools. We can manufacture patterns based on your specifications as we have an experience and expertise in this area from past 20 years. Whether you need simple or complex patterns, we have the expertise and the equipment to deliver quality results. We also believe that the price should be competitive making it work for both of us



# PATTERN MANUFACTURING

At RGK Group of Industries, we believe in using the latest technology available for our pattern making process. That is why we use Solid Edge software by Siemens to design the casting patterns and simulation software to test them with report generation. These software tools help us to produce complex patterns with high accuracy and quality that meet our clients' expectations.



# Machine Shop Department



# MACHINE SHOP FACILITIES

*CNC Turning Center*



*CNC Line with auto probing*



*Horizontal Milling Center with auto probing*



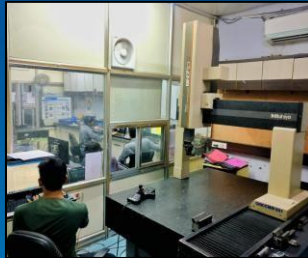
*Turn Mill*



*Roughness tester & Height Gauge*



*CMM Inspection*



*Inspection Room*



*Balancing*



*CNC Press Break*



*Honing*



*VTL Line with auto probing*



*Automatic Positioner Welding*



*Other Machine Shop Facilities*

MACHINES	MACHINE COUNT
Turning centre	16
Vertical Machining Centre	10
Horizontal Machining Centre	8
Vertical Turning Lathe	7
Honing	5
Drill Tap Centre	2
CMM	3
Welding Positioner	2
Welding Robot	2
SPM	5

# MACHINE SHOP : HMC MACHINES



JYOTI HX 600 -  
HMC



DOOSAN DNM 6700 - VMC



DOOSAN NHP 5000 - HMC

# MACHINE SHOP : LMW – CNC TURNING MACHINES



LL20T L5



LL30T L10



LX20T L5



# ROBODRILL MACHINE FOR PRODUCTION ENHANCEMENT



		Travel [mm]			Control unit	
X-axis		300	500	700		
Y-axis		300+100	400			
Z-axis		330				
Tool storage capacity	21 tools	α-D21S <i>ı</i> B5	α-D21M <i>i</i> B5	α-D21L <i>i</i> B5	Series 31 <i>i</i> -B5	
	14 tools	α-D14S <i>ı</i> B5	α-D14M <i>i</i> B5	α-D14L <i>i</i> B5		
		21 tools	α-D21S <i>ı</i> B	α-D21M <i>i</i> B	α-D21L <i>i</i> B	Series 31 <i>i</i> -B
		14 tools	α-D14S <i>ı</i> B	α-D14M <i>i</i> B	α-D14L <i>i</i> B	

## Wide variety of spindle

Optimum spindle selectable according to application

Spindle type	Spindle max. speed	Application
Standard spindle	10000 min <sup>-1</sup>	Applicable to wide range machining use
High torque spindle		Applicable to heavy machining of iron parts
High acceleration spindle		Applicable to high speed, high efficiency machining of aluminum parts
High speed spindle	24000 min <sup>-1</sup>	Applicable to smooth surface machining





# PROBE & IOT COMPLIANCE



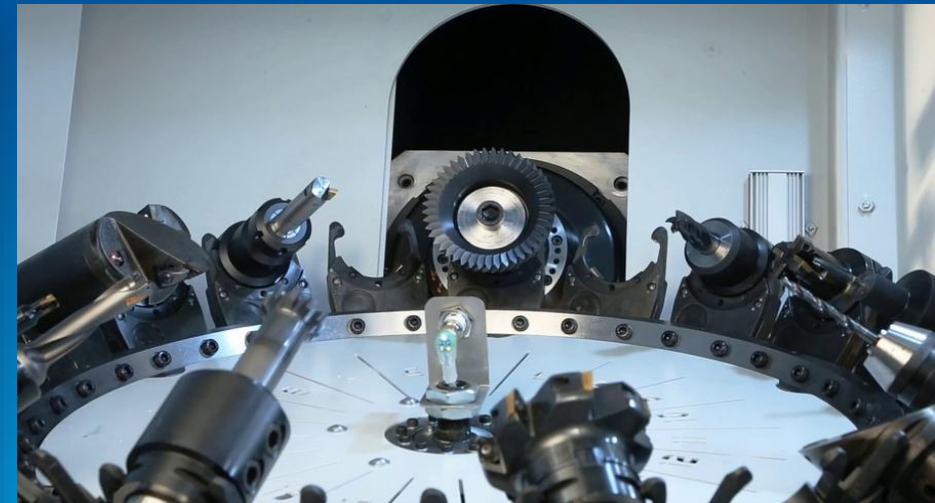
## Benefits:

- Auto measurement of the inner diameter of the pipe
- Auto measurement of collar & pre Inner diameter
- Auto measurement of the finished bore of the collar
- Auto measurement of step height of the collar
- Auto measurement of the total length of the collar
- Auto tool wear offsetting
- Auto tool selection.



# GEAR DEPARTMENT – UNDER GANGA R K INDUSTRIES PVT. LTD.

- We would like to introduce our new department under Ganga R K Industries Pvt. Ltd. This unit will mainly focus on Gear manufacturing and prison gear box assembly.
- Our state-of-the-art facilities and world-recognized machinery allow us to produce high-precision gears with the latest gear technology. We adhere to all AGMA and DIN standards for gear manufacturing, ensuring that our customers receive only the highest quality gear solutions.
- We understand the importance of precision in gear manufacturing. That's why we use only the best equipment and techniques to ensure that every gear meets our high standards. By partnering with us, you can be confident that you are receiving the best possible gear solutions for your needs.

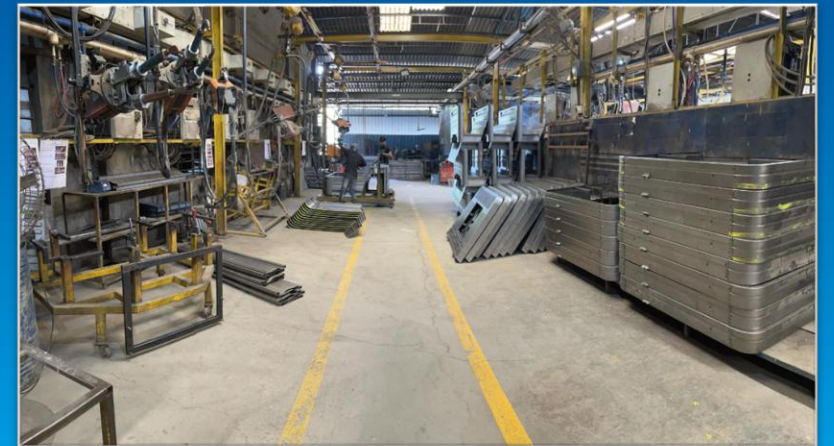


# Fabrication Department



# FABRICATION DEPARTMENT

- The Fabrication Department is a cornerstone of our manufacturing process, crafting top-tier components pivotal to our products' integrity
- Skilled Workforce: Our seasoned technicians and craftsmen excel in metal fabrication.
- Custom Solutions: We specialize in tailored, precision-fabricated parts, 3 wheelers, body, chassis parts and assemblies, etc.
- Rigorous Inspection: Each component undergoes meticulous inspection to meet specifications and standards.
- Compliance: We adhere to industry regulations, prioritizing quality and safety
- Our Fabrication Department upholds our commitment to excellence, driving innovation and exceeding customer expectations in metal fabrication





# FABRICATION MACHINE SHOP

**Weldor make  
Shearing machine**



**Amada make turret punch**



**Small Roll forming**



**Big Roll forming**



**Amada make CNC-Bending  
Machine**



**Mechanical bending Machine**



**Power Press**



**ACL-CNC Bending Machine**



# 3 WHEELER BODY PARTS





# CARGO AND SUB ASSEMBLY PARTS





# FABRICATION PART: TIPPER BODY



# AUTOMATIC ROBOTIC WELDING UNIT

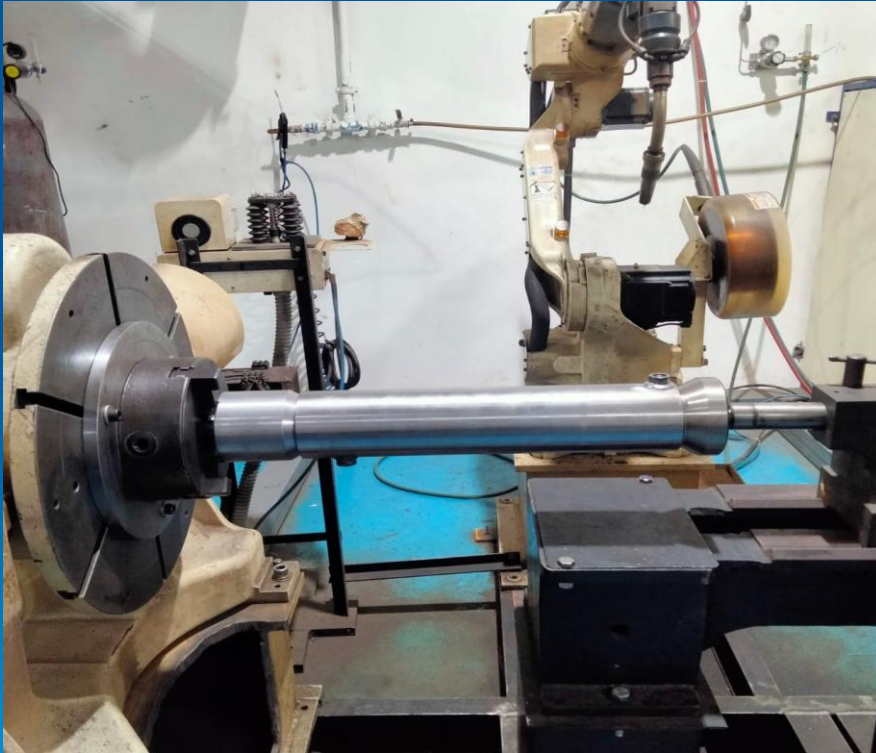
We have Introduced a new State of the Art technology all the way from Japan, OTC robotic welding cell-unit at our organization.

- ☐ High weld quality
- ☐ High accuracy
- ☐ Consistent torch position and attitude
- ☐ No interference with tooling and work piece
- ☐ Flexible attitude
- ☐ Reduced costs
- ☐ Gas saving & flow monitoring equipment
- ☐ Automatic nozzle cleaning and wire cutting equipment





## Job Holding



For hydraulic cylinder



For P T Housing (Actuators housing)



# Destructive test report



<b>RECORD</b>		<b>DOC. NO. :</b> RGK-R-6
		<b>REV. NO. :</b> 00
		<b>DATE :</b> 01-04-20
		<b>PAGE :</b> 1 OF 1
<b>INSPECTION REPORT - DESTRUCTIVE TEST</b>		
<b>Part No. :</b> PT -100-180	<b>Date</b>	16-Jan-23
<b>Name :</b> Housing	<b>Checking Frequency :</b> 1 mtr. / 40 Mtr.	
<b>Drg. / Rev. No. :</b> 72763 / D	<b>Inspector Name</b>	YOGESH KALENA
<b>Operation Name :</b> Destructive Test	<b>Job Sr. No.</b>	10KSF A5600
<b>Section Image : Big Culler</b>		
		
<b>Section Image : Small Culler</b>		
		
<b>Note :</b> Destructive Test to be carried out as per Guideline - Doc. No. RGK-GL-45.		

# Welding profiles by robotic welding





# Hydraulic test report



KOTECHA STEEL FORGE & CAST INDUSTRIES PVT. LTD.														DOC. NO. :		REV. NO. :		DATE :		PAGE :	
HYDRAULIC CYLINDER TEST REPORT																					
PART NO. & REV. NO. :										CYLINDER ID :											
PART NAME :										ROD OD :											
BATCH NO. :										STROCK LENGTH :											
BATCH QTY. :										REQUIRED HOLDING PRESSURE (IN PSI) :											
TEST DATE :										WORKING PRESSURE (IN PSI) :											
Job No.	Ext. Friction PSI Cylce-1		Ret. Friction PSI Cylce-1		Ext. Friction PSI Cylce-3		Ret. Friction PSI Cylce-3		Ext. Friction PSI Cylce-5		Ret. Friction PSI Cylce-5		Net. 30Sec. Holding Pressure In PSI Cycle-4		Ext. 30Sec. Holding Pressure In PSI Cycle-5		Result				
	Min.	Max.	Min.	Max.	Min.	Max.	Min.	Max.	Min.	Max.	Min.	Max.	Start	End	Start	End					
																	True/Fail				
OBSERVATIONS :										RETRA	EXTRA	ROD MOUNT ORIENTATION :									
HYD. TUBE TO TUBE												OIL DRAINED :									
HYD. TUBE TO VALVE BLOCK OR VALVE BA																					
PORT TO TUBE																					
ROD SEAL / WIPER											NA										
BASE											NA										
STATIC ORING											NA										
VALVE CAVITIES												TEST DETAIL									
PORT CAVITIES												RESULT OF TEST PRESSURE :									
CAPS / FITTINGS												GENERAL LEAKAGE :									
CHECK FOR WELD AND SEAL LEAKS												TEST STAMP :									
COMMENT (IF ANY) :												CHACKED BY			APPROVED BY						



# Types of test reports

## Bend Test



Root bend



Face bend

## Micro Hardness Test

**Unitech METALLURGICAL SERVICES** Metallurgical Laboratory  
IBR Approved

Report No: UR-TC715222000020334F Page: 1 of 1 Issue Date: 12.09.2022

To: Kotecha Steel Forge Pvt. Ltd., Plot No. 1284, 4th Industrial Area, Phase III, Rajkot.

Test Performed At: Unitech Metallurgical Services, Ahmedabad

Instrument Utilized with calibration due date: VHD-1000A (Micro Vickers Hardness) (Due Date: 12.12.2022)

Letter date: 05.09.2022

Party's Reference: Gas Nitrided Sample drawn By: Party

Condition of Sample: 1026 welded with ER-805 D2

Specification/MOC (material of Component): 12.09.2022 Date of Testing: 12.09.2022

Sample received date: 12.09.2022

Sample ID: Rectangle Piece

Discipline / Group: Mechanical / Mechanical Properties of Metals

Test Method: ASTM E 384-17

Location	Hardness (HV0.1)	Approx. Hardness (HRC)
Weld (Upper Right Side)	229.8	98.30
Weld (Upper Left Side)	215.8	95.97
Weld (Lower Right Side)	222.4	97.03
Weld (Lower Left Side)	221.2	96.94
Heat (Upper Right Side)	196.5	92.30
Heat (Upper Left Side)	208.8	94.77
Heat (Lower Right Side)	207.5	93.84
Heat (Lower Left Side)	198.4	92.98
Base (Right Side)	197.9	92.58
Base (Left Side)	212.7	95.45

Remark: End Of Report

Checked By: [Signature]  
Reviewed & Authorized By: SUMIT HIRPARA (QM)  
UNITECH METALLURGICAL SERVICES

Block No. C-120, Tube Estate & Plaza, Opp. Bhagyoday Hotel, Changodar, Ahmedabad-382213. Mo. 94260 25494, 90160 37155  
Email: unitech\_lab@rediffmail.com, unitech.ahmedabad@gmail.com

**Unitech Laboratories Services** SINCE 2010  
16, Sanrat Industrial Area, B/h. S. T. Workshop  
Gondal Road, Rajkot-360 004 Gujarat, INDIA  
M +91-84600 60450, 99742 01090, 79901 74169  
E unitech\_lab@yahoo.com

NABL ACCREDITED LABORATORY AS PER ISO / IEC 17025:2017 FOR CHEMICAL AND MECHANICAL TESTING

ULR-TC732222000048097E

Name of the Customer: KOTECHA STEEL FORGE AND CAST INDUSTRIES PVT. LTD. Lab No.: UT/701/0922

Plot No. 104A/105, G.I.D.C., Bamanbore, Ta: Chotila, Surendranagar (Guj.) INDIA

Date of Reporting: 19/09/2022  
Date of Receipt: 19/09/2022

Group: Mechanical property of metals  
Sub Group: Ferrous materials, alloys and products  
#Customer Reference No.: Letter Date-11/09/2022  
Condition of Sample: Test Piece  
#Material Specification: SAE1026  
#Identification of Sample: Root Bend  
#Type of Test: Bend Testing  
Instrument Utilized: Universal testing machine-01-TW1-TUTE-40T  
Calibration Status: 13/04/2022-12/04/2023  
Date of Testing: 11/09/2022  
Test Method: ASTM A370

**RESULT**

Bend at: 180 degree  
Mandrel size: 4t

Observation: No cracks found on the outside of the bend portion of the specimen.

Remarks: Test found satisfactory.

End of Report

Tested By: Ravi Hirpara (Mechanical Incharge)

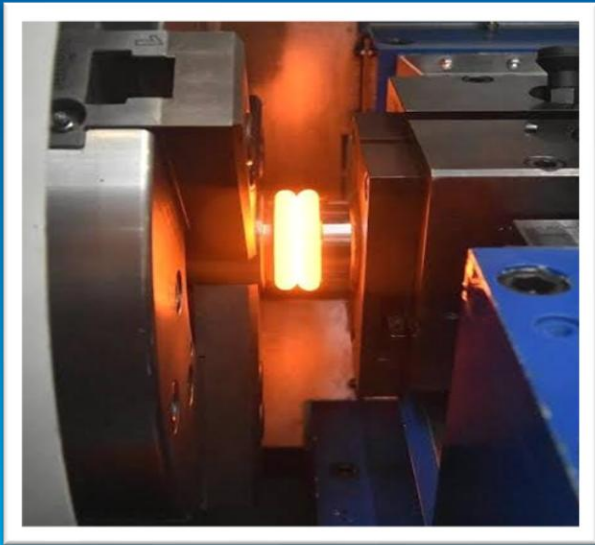
Authorized signatory: Deepak Solanki (Quality Manager)

Note: (1) Sample(s) not drawn by ULS. The results relate only to the sample(s) tested.  
(2) This certificate shall not be reproduced, except in full, without the written approval of ULS.  
(3) If balance material is available after testing, it will be retained for 15 days maximum. If customer wants to retain it for use more than this date, he has to inform in writing or he can collect the same.  
(4) While "ULS" has made their best endeavours to provide accurate and reliable information, ULS is not responsible for any financial liability due to any act of omission or error made.  
(5) The conformity statement is given based on decision rule documented in Quality Manual Annexure-3 'W' Information Given by Customer

Page No: 1/1

You can always trust on our accuracy.

# Outsource friction welding

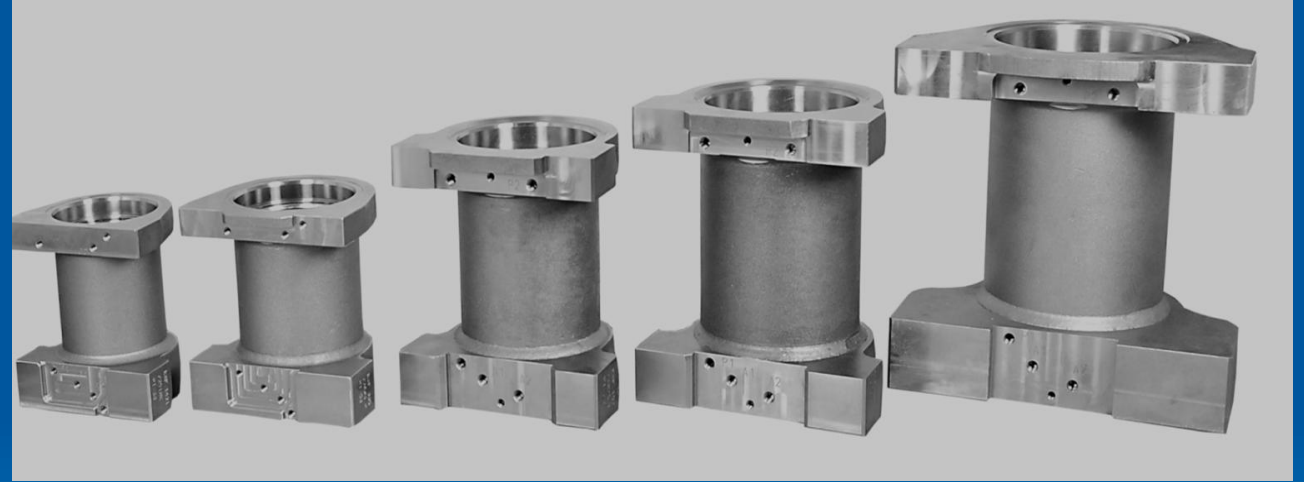


Flash Machining

# Hydraulic Parts



Pivot Shaft



PT Housing

**Developed product as per design by Parker- Hannifin & assembly used for Caterpillar's construction and earthmoving machineries**



# HOT DIP GALVANIZING UNIT

# HOT DIP GALVANIZING UNIT 700+ TON CAPACITY

*Material Hanging Process*



*Hot Dip Process*



*Passivation Process*



*Ready for Assembly Line*



# HOT DIP GALVANIZING UNIT 700+ TON CAPACITY

*Assembly Line*



*Assembly Line*



*Assembly Line*



*Dispatch Area*





# AUTOMATIC INSPECTION

We at RGK Group of Industries have introduced: IN-SIGHT2000 VISION SENSOR at KSFCI Unit

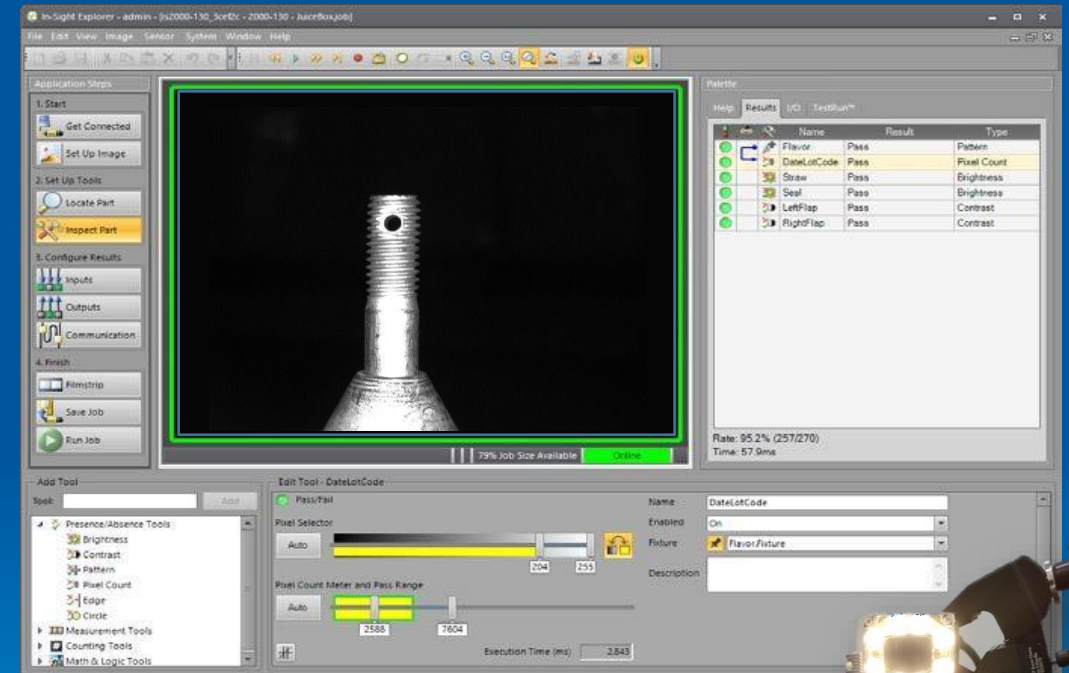
- Eliminating human error during Inspection
- Increased throughput
- Higher quality

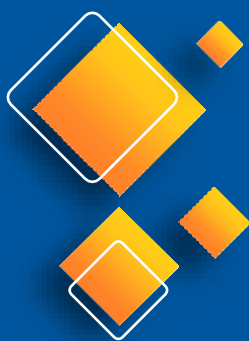
Manual inspection can be slow, prone to errors, and often impossible considering the quantity, product size, lighting conditions, or line speed.



# AUTOMATIC INSPECTION

- The In-Sight Explorer: Easy Builder interface provides a fast, step-by-step application setup that allows even novice users to achieve extremely reliable inspection performance in nearly any production environment.
- Intuitive, point-and-click setup tools accomplish basic pass/fail inspections.
- Users can create more complex inspection applications using In-Sight vision systems in the same In-Sight Explorer interface.





## ASSOCIATE PARTNER FORGING PLANT FACILITIES

### FORGINGS

- Capacity: 25000 Tons PA 0.5 kg to 150 kg Single Piece Weight.
- Circular shape forging to Near Net Forgings, Shaft, Pinion, Flanges, Bearing, Gears, Crown Wheels & Rings etc.

### HYDRAULIC EXTRUSION LINE

- Capacity: 10000 Ton PA.
- Job Capacity: 5 Kg to 150 Kg Single Piece Weight
- Flash Less Forge

### RING ROLLING MACHINES

- Capacity: 15,000 Ton PA
- Job Capacity: 5 Kg to 150 Kg Single Piece Weight
- Size: 150 mm to 800 mm OD
- Grade: Carbon Steel, Alloy Steel, Stainless Steel, etc...
- Automatic production line from Induction to Presses

### SUPPORTING FACILITIES

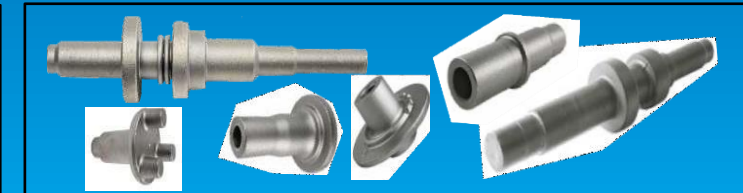
- ❖ Hydraulic Extrusion Press Line of Lasco 630TON
- ❖ MPM Hammers: 1 TON, 3 TON and 4 TON
- ❖ Range of Press for Trimming
- ❖ Ring Rolling Machines for 150mm to 800mm OD
- ❖ Induction Heaters of 75kw, 350kw, 650kw & 750kw
- ❖ CNC Machine Shop
- ❖ Heat Treatment Shop
- ❖ Automatic Paint Line
- ❖ Automatic Multi Spindle Drilling Machines
- ❖ In-House Testing Laboratory
- ❖ Band Saws & Automatic Billet Shearing Machines cutting up to 350mm
- ❖ Die shop - Die designing and Tool room
- ❖ Component Design Department with CAD/CAM facilities



1 Ton, 3 Ton & 4 Ton  
MPA Hammers

0.5 to 150 kg Single Piece Forged  
Products

25,000 TON  
Production Capacity (Per Annum)





# ASSOCIATE PARTNER PRECISION LOST WAX INVESTMENT CASTING (FEINGUSS - MICRO FUSIONE)

## INFRASTRUCTURE

### Our Plant at a Glance :

- Plant Capacity: The plant has installed capacity to produce 80 Ton/Month of Carbon Steel, Stainless Steel, Special Alloys, Duplex Steel, Non-ferrous & Many more grades as per ASTM – AISI – DIN – SAE – BS Standard and As per your requirements we can produce it. The plant is having area of around 4000 sq. meter.
- We have Installed Medium Frequency Furnaces of 250kw with 2 crucible 300kgs. made by Inductotherm & shot blasting Machine

### In general we can make any intricate

- Lost Wax Investment Castings for various industries.
- Castings weighing from 0.030 Kilograms to 120.00 Kilograms single piece

### Material Poured :

- Ferrous: Austenitic Stainless Steel, Carbon Steel, Low Alloy Steel, Nickle Based Super Alloy, Heat Resisting Steel, Martensitic Stainless Steel, Duplex Steel, Precipitation Hardened Steel.
- Non-Ferrous: Phosphor Bronze 1, Phosphor Bronze 2, Aluminum Bronze, Brass, Copper, Aluminum.

## PROCESS

- In-house Dies (Patterns/Tools) manufacturing unit using latest CAD/CAM facilities (Ideas and Delcam License Software).
- Injection and production of wax pattern from Dies (Patterns/tools). All Wax patterns are 100% dimensionally checked.
- The Wax pattern after forming the tree of the cluster undergoes the ceramic coating process. This process is done under Temperature & Humidity controlled rooms so that the best dimensional accuracy and excellent surface finish are achieved.
- After the coating process, the wax is removed by the De-Waxing process, which is done in an autoclave De-Waxing machine.
- The Ceramic molds are baked at temperatures ranging from 900°C to 1150°C depending on the geometry and size of the casting. The molten metal is then poured into the baked ceramic molds.
- The casting then undergoes fettling and finishing process such as Gate Cutting, Gate Machining / Grinding, Sand Blasting, Shot Blasting, Leaching, Deburring, etc.
- The casting then undergoes Heat Treatment as per the material specifications.
- Heat Treatment graphs and cycles are recorded and documented.
- All castings are subject to 100% visual inspection.
- All critical dimensions are 100% inspected before packing and shipment.
- We also supply castings in machined condition, if asked for.
- Castings can be also supplied with various types of finishing such as passivation, Acid Pickling, Electro-polishing, Blackening, powder coating, shot blasted, Glass bead blasted.



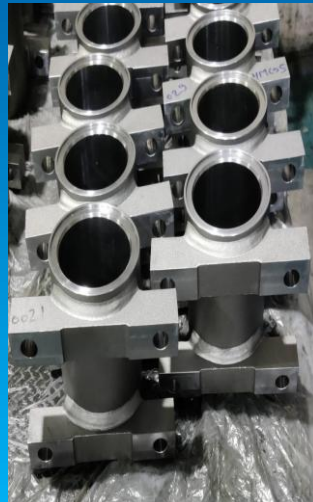
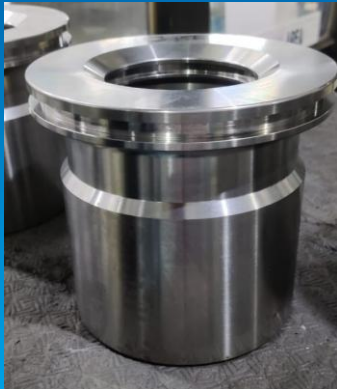
# Product portfolio of RGK

- Chain link
- Pulley 3125802
- Pulley 81021477
- Pulley 81015646
- Insert Track



# Product portfolio of Hydraulic parts for assembly in various application

- P. T. Housing
- Shaft
- Shaft Flange
- Piston Sleeve
- Foot Housing
- Cylinder
- Lufkin shaft





# Product portfolio of Hydraulic parts for assembly in various application



- Pivot Shaft
- Hub
- Pistons
- Shafts
- End head
- Piston head

# Product portfolio of RGK



**Railway trackline Parts**



**Railway transmission  
chain Parts**



**Material handling part**



# Product portfolio of RGK

RGK Group specializes in durable, precision-engineered components for solar systems, including castings, module mounting brackets, structures, and fasteners. Our custom casting solutions meet global standards (UL 2703, ASTM A536, ISO 8062-3), ensuring reliable and efficient solar installations. Trusted by the renewable energy sector for superior quality.



**Solar Parts**



**Implementation of Our Products**



# Enclosure for Oil and Gas



# Product portfolio of RGK

## Pump Parts



## Engineering Components



## Valve Components



## Processing



## System



# Product portfolio of RGK



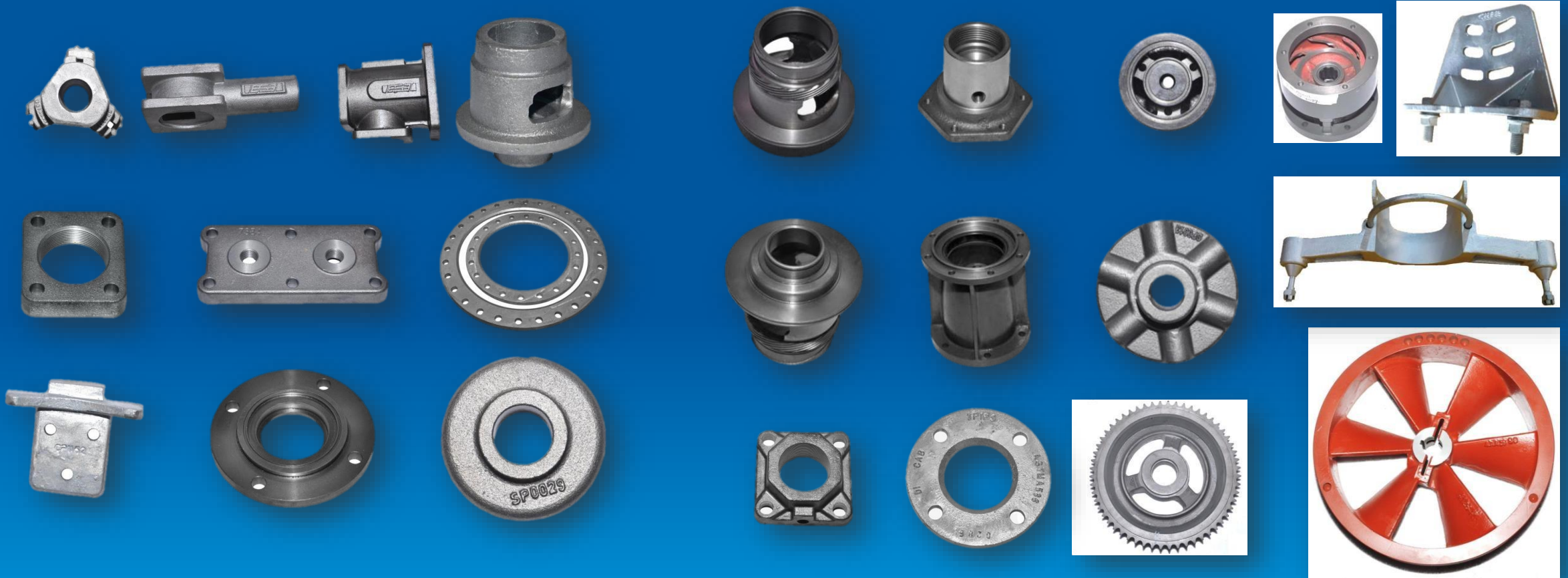
Housing for Hydraulic  
Actuators



Control Housing



# Product portfolio of RGK



Other Casting Products

## Product portfolio of RGK

Rotary Screw Air Compressor Tank  
with Air Covers –

S.G. Iron Grade



# 2023-24 YEAR ACCOMPLISHMENTS



# PITTLER POWER SKIVING

The DVS Pittler PV315 machine serves as a comprehensive machining center, proficient in various gear cutting tasks with a 45-degree helix angle. It also offers chamfering, OD and ID turning, and drilling through a 12-tool turret, optimizing tool life and maintaining consistent quality. The machine employs Power Skiving, ensuring high efficiency and precision for both internal and external gears. Its compact design and user-friendly interface facilitate handling complex geometries and materials with ease.

DVS Company will provide a proof of concept by executing nine jobs on the PV315 machine under their expert guidance prior to shipment to India



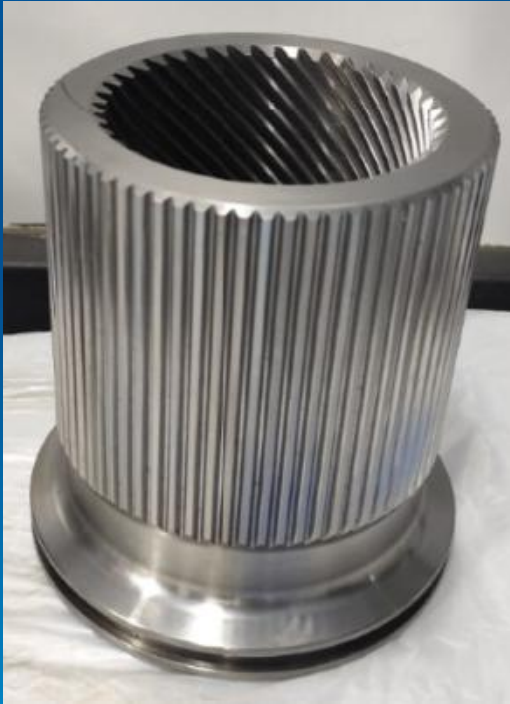
# Quality Measuring Instrument

## KLINGELNBERG P26 GEAR TESTING MACHINE

- Precision measuring center that can inspect various types of gears and other components with high accuracy and efficiency as per international standards.



# Gear Parts





# Gear Parts



# FOUNDRY UPGRADATION

- CORE SAND AUTOMIZATION
  - Core sand preparation is done automatically without any human intervention
  - This will give us consistent quality and reduce the sand wastage



# FOUNDRY UPGRADATION

- Induction Melting Furnace(500 kg)
  - It has the IOT system inbuilt with live temp readings. On top of it has hydraulic tilting mechanism with water cooled leads
  - It will help to increase our foundry capacity up to 250 Tones





# FOUNDRIY UPGRADATION

- VINAR CASTING COOLING CONVEYOR SYSTEM
  - Significantly more effective cooling for any given throughput and temperature difference
  - Minimization of interfaces and therefore less cast part handling
  - Less production area required for cooling cast parts
  - Less hazard points by encapsulation
  - Compact plant



# AUTOMATIC ROBOTIC WELDING UNIT

We have Introduced a new State of the Art technology all the way from Japan, OTC robotic welding cell-unit at our organization.

- ❑ High weld quality
- ❑ High accuracy
- ❑ Consistent torch position and attitude
- ❑ No interference with tooling and work piece
- ❑ Flexible attitude
- ❑ Reduced costs
- ❑ Gas saving & flow monitoring equipment
- ❑ Automatic nozzle cleaning and wire cutting equipment



# MACHINE SHOP UPGRADATION

- CMM Apex V 7106 PH 10MQ SP25 (Mitutoyo)
  - Precision Measurement: Accurate and repeatable measurements with PH10MQ SP25 probing system.
  - Advanced Probing Technology: PH10MQ SP25 allows fast and flexible measurement of complex features.
- VMC 850- Jyoti CNC
  - Robust design making it convenient for a wide range of parts
  - It has inbuilt probing system making it provide accurate and precision parts with zero human intervention.





# MACHINE SHOP UPGRADATION

- Trimos Advance 2D Height Gauge -
  - It delivers micrometer-level accuracy for reliable and repeatable measurements.
  - Intuitive touchscreen display ensures effortless operation and minimal training time.
- SALT TESTING MACHINE
  - Dual chamber allows us to assess multiple jobs at a time
  - It allows us to test our HDG parts



# MACHINE SHOP UPGRADATION

- HMC HX 600-Jyoti
  - It has a shower type coolant and a massive 120 auto tool changer system.
- LMW 350 CNC
  - Speeds up the production process & produce high precision parts with it's advanced features.



# MACHINE SHOP UPGRADATION

- UNIVERSAL TESTING MACHINE
  - Capable of tensile testing of casting parts
- MEBA BANDSAW CUTTING MACHINE
  - Long service life and accurate cutting with High speed cutting





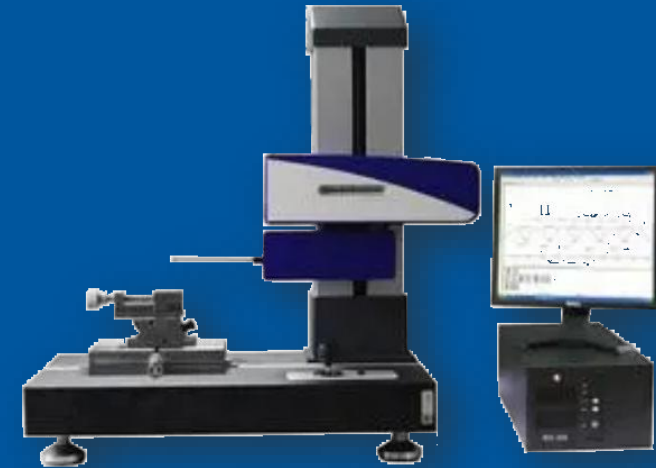
# MACHINE SHOP UPGRADATION

- VTL 400 LM-Ace Micromatic
  - Its offers robust and reliable machining capabilities for large and heavy work pieces.
- VMC- VMX 24- HURCO
  - high performance capabilities to any machining application.



# MACHINE SHOP UPGRADATION

- Contour Measurement machine
  - outstanding measurement ability when measuring the roughness of the inclined surface and arc
- HORIZONTAL HONING MACHINE
  - The machine is capable for jobs up to 4000 mm(158 inch) length



# MACHINE SHOP UPGRADATION

- WELDING MACHINE OTC
  - Unmatched precision and reliability for consistent weld quality
  - capacity to perform for diverse parts and heavy parts up to 500 kg
- BK-Y10T HYDRAULIC RIVETING
  - Comparing with traditional pneumatic riveting, hydraulic riveting machine has advantages like the working condition is good, no noise, operation is agility, labor intensity is low, rivet speed is high, and the production efficiency is high.





# TECHNOLOGY UPGRADATION

## 2. New conference Room

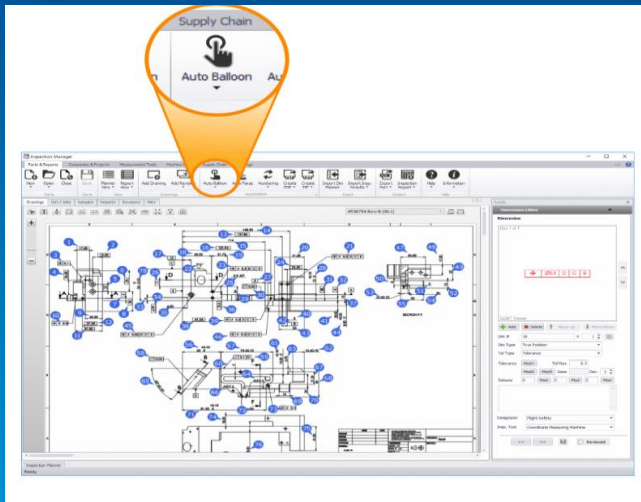
- Enhanced Meeting Efficiency
- Better Communication and Collaboration
- Real-Time Updates and Notifications
- Resource Optimization and Cost Savings
- Better Wayfinding
- Better Employee Productivity



# TECHNOLOGY UPGRADATION



3. 7 acres of land in Bamanbore area near foundry, international airport and highway which connects to the Mundra port



4. New Design software- One click auto Ballooning

# 2024-25 YEAR UPGRADATION PLAN



# MACHINE SHOP UPGRADATION (Order placed and will be delivered in Feb-25)

- Induction Hardening Equipment
  - This furnace will be useful for our shafts.
  - This furnace has all the automation required and therefore it does uniform hardening



## NEW GALVENIZING PLANT (under technical discussion with manufacturer)

- New automatic hot dip galvanizing plant having a capacity of 1000 Tones per month
- This Environmental friendly plant creates a maintenance-free finish and gives gives steel a long life and durability which lasts for decades



# POWDER COATING PLANT (under technical discussion with manufacturer)

- Step into the future of manufacturing excellence as we gear up to revolutionize our operations with the upcoming installation of a state-of-the-art powder coating plant in our factory.
- We aim to follow all the quality parameters as per the standards and even have developed SOP for the coating process
- We will have setup in-house Quality lab specific to paint process and have added all the necessary equipment such as colorimeter, scratch test and etc.





# Design Software

- **SolidWorks**
- World-class solution for both 2D and 3D design, offering advanced features for creating detailed and precise designs. Additionally, it includes powerful simulation capabilities, allowing users to test and visualize their designs in real-world scenarios

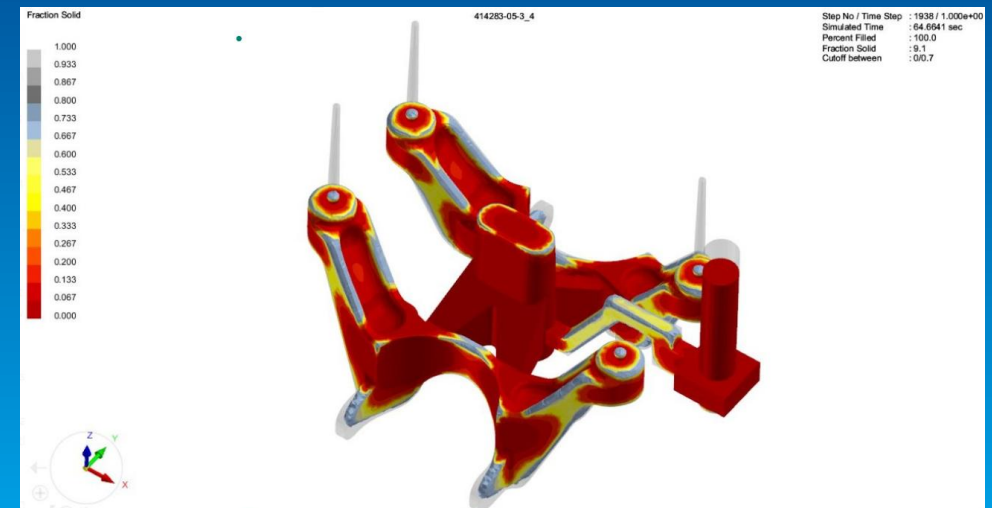
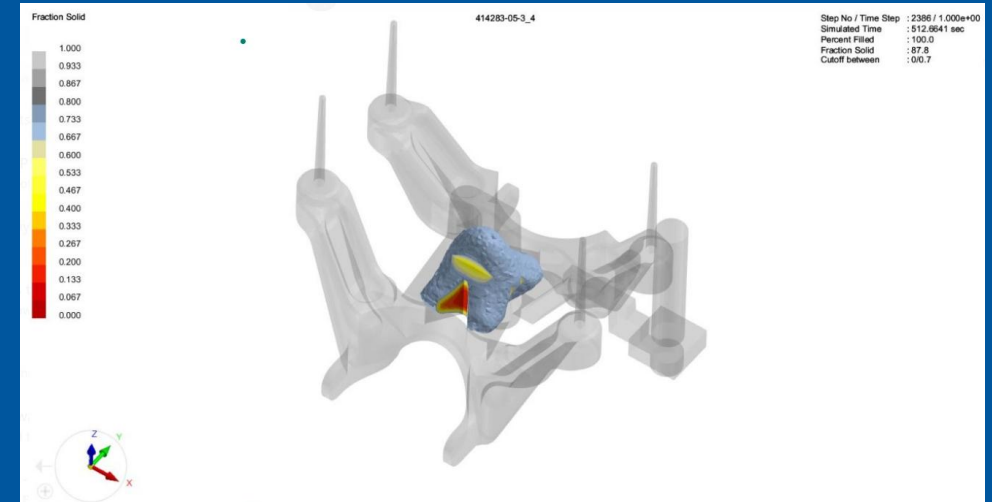


# Simulation software

Simulation software models real-world processes using mathematical formulas, allowing users to observe operations without performing them. It is widely used in engineering, science, and business for design, analysis, and optimization.

## Key Features:

- **Modeling:** Create detailed models of physical systems.
- **Analysis:** Test and analyze system behavior under various conditions.
- **Visualization:** Visualize processes in 2D or 3D.
- **Optimization:** Improve system performance through simulations.



# Camera for Reverse Engineering

1. **3D Scanning:** Cameras equipped with 3D scanning capabilities capture precise measurements of parts, ensuring they meet design specifications.
2. **Defect Detection:** High-resolution imaging helps identify defects or deviations in manufactured parts, improving overall quality.
3. **Design Analysis:** Reverse engineering cameras allow engineers to analyze existing products, understand their design, and make improvements.
4. **Prototyping:** Captured data can be used to create digital models for rapid prototyping and testing.



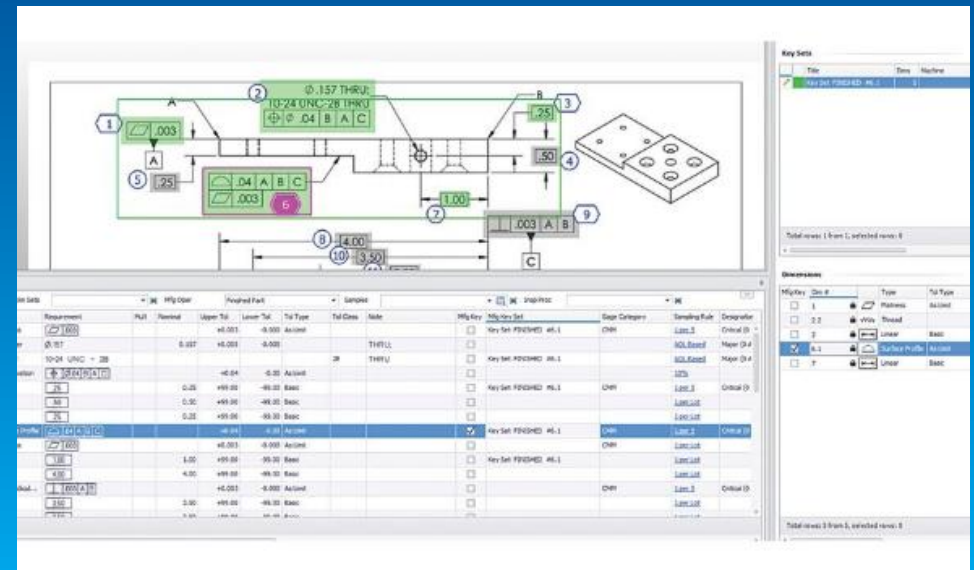
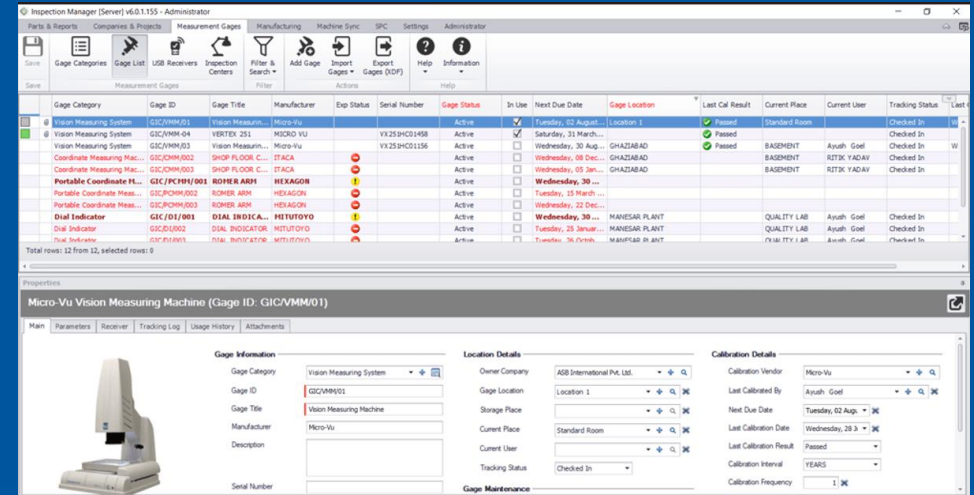


# Inspection Manager software

The Inspection Manager software is a comprehensive quality management solution designed for the manufacturing industry. It automates and streamlines quality control processes, enhancing efficiency and accuracy.

## Key Features:

1. One-click Ballooning
2. Documents and drawing revision Management
3. Gage/Measurement Tools Management
4. Custom Reports & Standards Templates (FAI, PPAP. Etc) & Many more



# Faro Arm

The **Faro Arm** is a portable coordinate measuring machine (CMM) developed by FARO Technologies

## Key Features:

- **High Accuracy:** Provides precise measurements for quality control and inspection.
- **Portability:** Lightweight and easy to transport, allowing for on-site measurements.
- **Versatility:** Suitable for a wide range of applications, including part inspection, reverse engineering, and CAD-to-part comparison.
- **Ease of Use:** User-friendly interface with quick setup and operation.



# Fettling Automation

- **Robotic Grinders:** Automated grinders equipped with robotic arms handle complex shapes and large castings efficiently..
- **Surface Finishing:** Automated systems perform tasks such as grinding, polishing, and deburring to achieve the desired surface finish.
- **Dust and Waste Management:** Integrated dust collectors and waste management systems ensure a clean and safe working environment.
- **Consistency and Precision:** Ensures uniform quality and precision in finishing, minimizing defects and rework.
- **Enhanced Safety:** Reduces worker exposure to hazardous conditions, such as dust and noise, improving overall workplace safety.





# Vision Inspection System

## Key Features:

- **High-Resolution Cameras:** Capture detailed images of products.
- **Specialized Lighting:** Provides consistent illumination for accurate inspection.
- **Image Processing Software:** Analyzes images to detect defects, measure dimensions, and verify assembly.
- **Integration:** Can be integrated into production lines for real-time inspection



# Short Blasting Machine

Used to clean, strengthen, or polish metal surfaces by propelling abrasive media (shots) at high velocities.

- **Efficient Cleaning:** Removes rust, scale, paint, and other contaminants.
- **Surface Preparation:** Enhances adhesion for coatings and paints.
- **Durability:** Improves the strength and appearance of metal parts.



# Charpy Test Machine

- Standardized high strain rate test which determines the amount of energy absorbed by a material during fracture.
- Absorbed energy is a measure of the material's notch toughness





## Two Special Purpose Machine (SPM)

- High productivity machine, with specially designed tooling and fixture, dedicated for mass producing the same component day in and day out



# No-Bake Casting Line

- To fulfill the purpose of handle a variety of complex geometries and large-scale casting, meeting the specific requirements of clients in the manufacturing and heavy engineering sectors.
- Material grades can be possible:
  1. Gray Cast Iron
  2. SG/Ductile Iron
  3. Alloy Steel



# REVOLUTIONIZING SUPPLY CHAIN: CREATING A CENTER OF EXCELLENCE



# CONCEPT

Developing a Startup for SME Platform that will serve as a hub for all aspects of capacity expansion, growth, providing our suppliers with access to the latest tools, resources, expertise and training



## Infrastructure and Investment

- 1 Cr investment for a center of excellence to empower suppliers with advanced facilities of quality room, training center, system adoption, quality report generation and expert guidance

## Digital Connection

- The center of excellence will offer a digital platform connecting suppliers with potential customers, facilitating product showcasing and business growth

## Ideation and Due Diligence

- The concept of the supply chain center of excellence emerged from diligent vendor analysis and IGCC's supply chain due diligence course

# CERTIFICATIONS

ZERTIFIKAT ♦ CERTIFICATE ♦ CERTIFICADO ♦ CERTIFICAT ♦ 認 証 証 書




## CERTIFICATE

Certificate Registration No.: 12 111 62772 TMS / IATF Certificate No.: 0544896  
IATF USI: CPMTXC

The Certification Body  
of TÜV SÜD Management Service GmbH  
certifies that the organization

**Ganga R.K. Industries Pvt. Ltd.**  
Plot No. G - 1204, GIDC, Lodhika Industrial Area, Village – Metoda  
Rajkot - 360021, Gujarat  
India

for the scope

**Manufacture of Machined and Fabricated Sheet Metal Components**  
(without Product Design as per Chapter 8.3)

has established and applies a Quality Management System.

An audit was performed and has furnished proof  
that the requirements according to

**IATF 16949**  
First Edition 2016-10-01

are fulfilled.

Issue date: 2024-09-16  
Expiry date: 2027-09-15



Fred Wenke  
Head of Certification Body  
Munich, 2024-09-16

Page 1 of 1

TÜV SÜD Management Service GmbH • Zertifizierungsstelle • Riederstrasse 57 • 80339 München • Germany  
www.tuv-sud.com/de/certificate-validity-check



ZERTIFIKAT ♦ CERTIFICATE ♦ CERTIFICADO ♦ CERTIFICAT ♦ 認 証 証 書



## CERTIFICATE

The Certification Body  
of TÜV SÜD South Asia Private Limited  
certifies that



**Ganga R.K. Industries Pvt. Ltd.**  
Plot No. G - 1204, GIDC, Lodhika Industrial Area,  
Village – Metoda, Rajkot – 360 021, Gujarat, India

has implemented Quality Management System  
in accordance with **ISO 9001:2015**  
for the scope of

**Manufacturer of Machined and Fabricated Sheet Metal Components**

The certificate is valid from **2024-10-25** until **2027-09-15**  
Subject to successful completion of annual periodic audits  
The present status of this certificate can be obtained through TÜV SÜD website by scanning below QR code and by  
entering the certificate number (without spaces) on web page. Further clarifications regarding the status & scope of  
this certificate may be obtained by consulting the certification body at [info.india@tuv-sud.com](mailto:info.india@tuv-sud.com)

Certificate Registration No. **99 100 15504**  
Date of Initial certification: **2014-08-21**  
Issue Date: **2024-10-25** Rev. 00



Rahul Kale  
Head of Certification Body  
of TÜV SÜD South Asia Private Limited,  
Mumbai  
Member of TÜV SÜD Group







TÜV SÜD South Asia Pvt. Ltd. • TÜV SÜD House • Sakinaka • Andheri (East) • Mumbai – 400072 • Maharashtra • India



ZERTIFIKAT ♦ CERTIFICATE ♦ CERTIFICADO ♦ CERTIFICAT ♦ 認 証 証 書



## CERTIFICATE

The Certification Body  
of TÜV SÜD South Asia Private Limited  
certifies that


**KOTECHA STEEL FORGE AND  
CAST INDUSTRIES PRIVATE LIMITED**  
Plot No. 104 A / 105, G. I. D. C. Bamanbore,  
Ta. Chotila, Dist. Surendranagar. Bamanbore - 365520, Gujarat, India

has implemented Occupational Health and Safety Management System  
in accordance with **ISO 45001:2018**  
for the scope of





**Manufacture, Supply and Exports of Gray Iron Casting, Nodular/  
S. G. Iron casting and sub-assemblies for Automobile, Industrial,  
Construction, Agriculture Machinery and Solar tracking system**

The certificate is valid from **2023-11-27** until **2026-11-26**  
Subject to successful completion of annual periodic audits  
The present status of this certificate can be obtained through TÜV SÜD website by scanning below QR code and by  
entering the certificate number (without spaces) on web page. Further clarifications regarding the status & scope of  
this certificate may be obtained by consulting the certification body at [info.india@tuv-sud.com](mailto:info.india@tuv-sud.com)


Certificate Registration No. **99 117 01122**  
Date of Initial certification: **2023-11-27**  
Issue Date: **2023-11-27** Rev. 00



Rahul Kale  
Head of Certification Body  
of TÜV SÜD South Asia Private Limited,  
Mumbai  
Member of TÜV SÜD Group

TÜV SÜD South Asia Pvt. Ltd. • TÜV SÜD House • Sakinaka • Andheri (East) • Mumbai – 400072 • Maharashtra • India



# CERTIFICATIONS

ZERTIFIKAT ♦ CERTIFICATE ♦ 認証証書 ♦ CERTIFICADO ♦ CERTIFICAT



## CERTIFICATE

The Certification Body  
of TÜV SÜD South Asia Private Limited  
certifies that

**KOTECHA STEEL FORGE AND  
CAST INDUSTRIES PRIVATE LIMITED**  
Plot No. 104 A / 105, G. I. D. C. Bamanbore,  
Ta. Chotila, Dist. Surendranagar,  
Bamanbore - 365520, Gujarat, India

has implemented Quality Management System  
in accordance with **ISO 9001:2015**  
for the scope of

**Manufacture, Supply and Exports of Gray Iron Casting, Nodular/  
S. G. Iron casting and sub-assemblies for Automobile, Industrial,  
Construction, Agriculture Machinery and Solar tracking system.**

The certificate is valid from **2024-02-22** until **2027-02-21**  
Subject to successful completion of annual periodic audits  
The present status of this certificate can be obtained through TÜV SÜD website by scanning below QR code and by  
entering the certificate number (without spaces) on web page. Further clarifications regarding the status & scope of  
this certificate may be obtained by consulting the certification body at [info.in@tuvosud.com](mailto:info.in@tuvosud.com)

Certificate Registration No. **99 100 18343**  
Date of Initial certification: **2018-02-22**  
Issue Date: **2023-11-27** Rev. 00

  
 Rahul Kale  
Head of Certification Body  
of TÜV SÜD South Asia Private Limited,  
Mumbai  
Member of TÜV SÜD Group





TÜV SÜD South Asia Pvt. Ltd. • TÜV SÜD House • Sakinaka • Andheri (East) • Mumbai - 400072 • Maharashtra • India

ZERTIFIKAT ♦ CERTIFICATE ♦ 認証証書 ♦ CERTIFICADO ♦ CERTIFICAT



## CERTIFICATE

The Certification Body  
of TÜV SÜD South Asia Private Limited  
certifies that

**KOTECHA STEEL FORGE AND  
CAST INDUSTRIES PRIVATE LIMITED**  
Plot No. 104 A / 105, G. I. D. C. Bamanbore,  
Ta. Chotila, Dist. Surendranagar,  
Bamanbore - 365520, Gujarat, India

has implemented Environmental Management System  
in accordance with **ISO 14001:2015**  
for the scope of

**Manufacture, Supply and Exports of Gray Iron Casting, Nodular/  
S. G. Iron casting and sub-assemblies for Automobile, Industrial,  
Construction, Agriculture Machinery and Solar tracking system.**

The certificate is valid from **2023-11-27** until **2026-11-26**  
Subject to successful completion of annual periodic audits  
The present status of this certificate can be obtained through TÜV SÜD website by scanning below QR code and by  
entering the certificate number (without spaces) on web page. Further clarifications regarding the status & scope of  
this certificate may be obtained by consulting the certification body at [info.in@tuvosud.com](mailto:info.in@tuvosud.com)

Certificate Registration No. **99 104 01668**  
Date of Initial certification: **2023-11-27**  
Issue Date: **2023-11-27** Rev. 00

  
 Rahul Kale  
Head of Certification Body  
of TÜV SÜD South Asia Private Limited,  
Mumbai  
Member of TÜV SÜD Group





TÜV SÜD South Asia Pvt. Ltd. • TÜV SÜD House • Sakinaka • Andheri (East) • Mumbai - 400072 • Maharashtra • India



## MEMBERSHIPS



Indo-German Chamber of Commerce  
Deutsch-Indische Handelskammer  
Mumbai · Delhi · Kolkata · Chennai  
Bengaluru · Pune · Düsseldorf



Ministry of External Affairs  
Ministry of Commerce &  
Industry  
Department of Commerce  
Government of India



**FEDERATION OF INDIAN  
EXPORT ORGANISATIONS**

Set up by Ministry of Commerce, Government of India  
ISO 9001:2015 Certified



Indian Machine Tool  
Manufacturers' Association



Federal Ministry  
for Economic Affairs  
and Climate Action



**Confederation of Indian Industry**



# AWARDS AND ACHIEVEMENT

As we continue to achieve these prestigious awards consistently since 2003, our commitment to excellence remains unwavering, driving us forward in our pursuit of manufacturing innovation





# Ganga R. K. Industries Pvt. Ltd. Kotech Steel Forge & Cast Industries Pvt. Ltd.

*(A Government of India Recognized Export House) (An  
ISO-9001:2015 & IATF-16949:2016 Certified Company)*



## Thank You

Connect with us.



+91 9825075506



rgkotech@rgkgroup.net